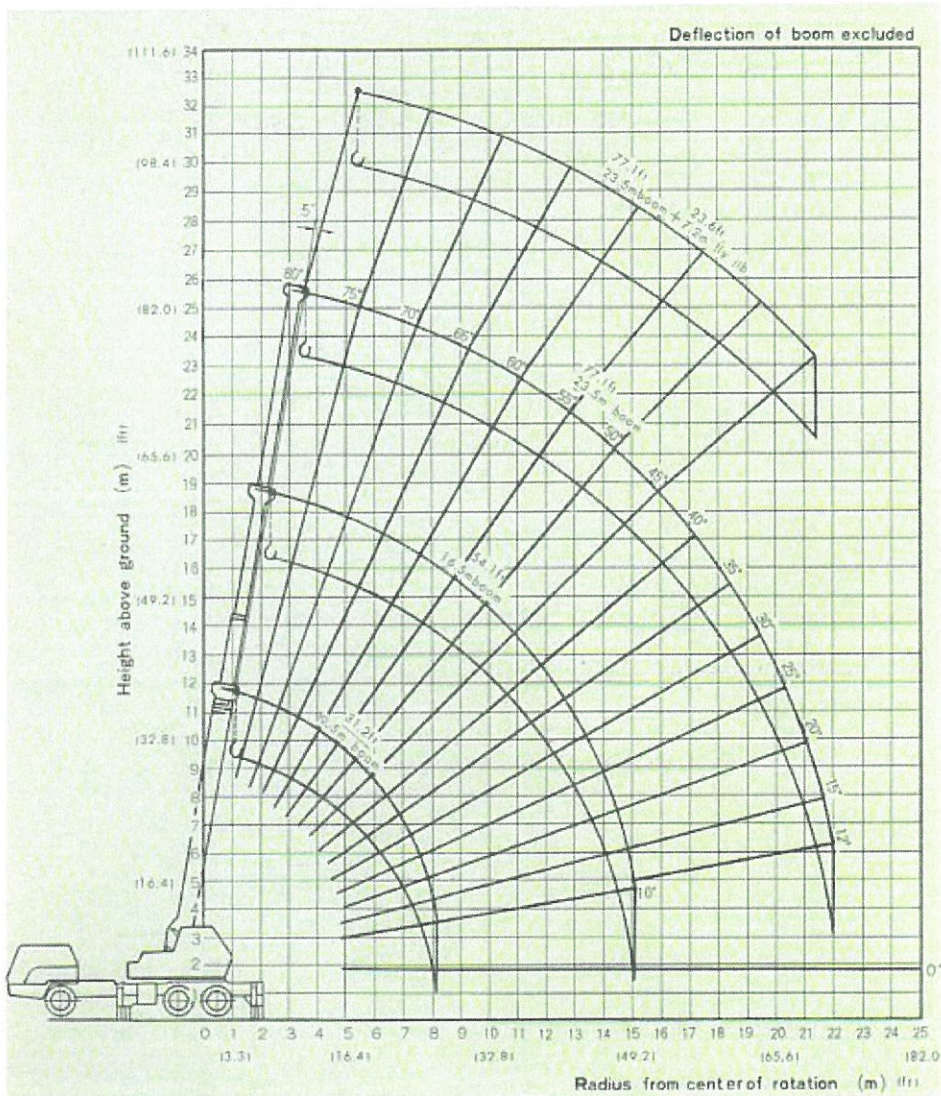


WORKING RANGES



RATED LIFTING CAPACITIES

Working radius (m)	With Outriggers (over side and over rear)				
	9.5 m (31.2 ft) boom	16.5 m (54.1 ft) boom	23.5 m (77.1 ft) boom	Boom angle	7.2 m (23.6 ft) fly jib
3.0	16.00 (35.27)	10.00 (22.04)		80°	2.00 (4.41)
3.5	13.55 (29.87)	10.00 (22.04)		75°	2.00 (4.41)
4.0	12.00 (26.45)	10.00 (22.04)		70°	2.00 (4.41)
4.5	10.75 (23.70)	10.00 (22.04)		66°	1.90 (4.19)
5.0	9.60 (21.16)	9.60 (21.16)	5.50 (12.12)	60°	1.20 (2.64)
5.5	8.25 (18.18)	8.25 (18.18)	5.50 (12.12)	55°	0.95 (2.09)
6.0	7.20 (15.87)	7.20 (15.87)	5.50 (12.12)	50°	0.70 (1.54)
6.5	6.40 (14.11)	6.40 (14.11)	5.50 (12.12)	45°	0.45 (0.99)
7.0	5.75 (12.67)	5.75 (12.67)	5.50 (12.12)	in metric ton (lbs)	
7.4	5.25 (11.57)	5.25 (11.57)	5.25 (11.57)		
8.0	4.60 (10.14)	4.60 (10.14)	4.60 (10.14)		
8.5		4.20 (9.26)	4.20 (9.26)		
9.0		3.80 (8.37)	3.80 (8.37)		
10.0		3.25 (7.16)	3.25 (7.16)		
11.0		2.75 (6.06)	2.75 (6.06)		
12.0		2.40 (5.29)	2.40 (5.29)		
13.0		2.00 (4.41)	2.00 (4.41)		
14.0		1.80 (3.97)	1.80 (3.97)		
16.0			1.30 (2.86)		
18.0			1.05 (2.31)		
20.0			0.75 (1.65)		
22.0			0.55 (1.21)		

NOTES

- The rated lifting capacities are the maximum loads guaranteed on a firm level ground and include the weight of hook block and other lifting equipment.

Hook Weight Kg (lbs)	for 16 ton	for 2 ton
	250 (551)	100 (221)

The capacities in the blue area are based on the structural strength and other capacities on 75% of tipping loads.

- The working radii are the actual values including the deflection of the booms. During the main hook operation, the working radius must not exceed 22 m (72.2 ft.).

- When the boom length exceeds the rated one, operation must be carried out under the lifting capacities rated for the longer rated boom length.

- The capacities are based on using outriggers fully extended. Any operation is prohibited unless the outriggers are fully extended even if in no load condition.

- During the main hook operation with the fly jib installed, 400 kg (882 lbs.) must be deducted from the capacities.

- With the fly jib installed, the boom must not be lowered below 45°.

- The number of parts of rope for each boom length is as follows.

Boom length	Parts
9.5m (31.2ft)	6
9.5m ~ 16.5m (31.2ft ~ 54.1ft)	6
16.5m ~ 23.5m (54.1ft ~ 77.1ft)	6

- The rated lifting capacities for fly jib hook are determined by each boom angle only and not determined by either boom length or working radius.

SUPERSTRUCTURE

CRANE PERFORMANCE

Boom length	9.5m ~ 23.5m
(Full power 3 section)	(31.2ft ~ 77.1ft)
Fly jib length	7.2m (23.6ft)
Boom derricking angle	-5° ~ 80°
Boom derricking time	47 sec. (min. to max.)
Boom telescoping speed	
Extension	0.18m/sec. (0.6ft)
Retraction	0.22m/sec. (0.7ft)
Hoist and lower rope speed	
Main winch	63m/min. (206.7ft)
Auxiliary winch	63m/min. (206.7ft)
Hoist and lower hook speed	
Main winch	10.5m/min. (34.5ft)
Auxiliary winch	63m/min. (206.7ft)
Slewing speed	3.1 rpm

WIRE ROPE FOR HOISTING

Main winch	Type	6 x Fi (29) I.W.R.C.
	Length	200m x 16mm dia.
Auxiliary winch	Type	6 x Fi (29) I.W.R.C.
	Length	90m x 16mm dia.

HYDRAULIC SYSTEM

Hydraulic pump	Tandem gear type
Hoist motor	Variable plunger type
Slewing motor	Radial piston type
Control valve	3 position 4 way double-acting type with integral check, and relief valves.
Cylinder	Double acting type

GENERAL DATA

CARRIER MODEL	MITSUBISHI K201L	
TOTAL LENGTH mm (ft)	11,580	(38.0)
TOTAL WIDTH mm (ft)	2,500	(8.2)
TOTAL HEIGHT mm (ft)	3,450	(11.3)
ENGINE	MITSUBISHI 6DC20A	
Model	MITSUBISHI 6DC20A	
Rated output PS/rpm	200/2,500	
GROSS WEIGHT kg (lbs)	20,300	(44,753)
FRONT kg (lbs)	5,700	(12,566)
REAR kg (lbs)	14,600	(32,187)
WHEEL BASE mm (ft)	4,500	(14.8)
TREAD FRONT mm (ft)	2,020	(6.7)
TREAD REAR mm (ft)	1,865	(6.1)
MAX. SPEED km/h	70	
TURNING RADIUS m (ft)	9.5	(31.16)
GRADEABILITY (tan θ)	29%	
DRIVE SYSTEM	6 x 4	
CLUTCH TYPE	Dry single disc	
TRANSMISSION SYSTEM	Synchromesh	
TIRE FRONT	11.00-20-14PRx2	
TIRE REAR	11.00-20-14PRx8	
STEERING TYPE	Ball nut with power assist	
ELECTRICAL SYSTEM	24V starting, lighting, instrumental light, beam headlight, tail and stop-light, windshield wiper, horn and turn signal.	

- MACHINE is subject to the user's specifications and any chassis having proper capacity and dimension are applicable.
- We reserve the right to make specification or equipment changes without notice.

Carrier: MITSUBISHI K201L

